

# How to install the Integer U80II (Ethernet)

**\*\*\*Please call us to get the U80II printer driver\*\*\***

**Unbox your Integer U80II**

**[image-1623341637318.png](#)**

**Plug the power cable into the back of the printer and plug socket**

**[image-1623247612338.png](#)**

**Then plug the Ethernet cable into the back of the printer and a port into your router**



**Turn the printer on**

**[image-1623410852743.png](#)**

**Once the green light is on go to 'File Explorer'**

**[image-1623411102633.png](#)**

**Click on 'This PC'**

**[image-1623411184445.png](#)**

**Then go to 'C: Drive'**

[image-1623411221731.png](#)

Image not found or type unknown

**Click on the 'Integer' folder**

[image-1623411257587.png](#)

Image not found or type unknown

**Open the folder 'Setup\_U80 V1.12' folder**

[image-1623411297821.png](#)

Image not found or type unknown

**Double click on the 'Setup.exe'**

[image-1623411386115.png](#)

Image not found or type unknown

**Click on the 'Receipt' drop down and select 'U80II'**

[image-1623411481106.png](#)

Image not found or type unknown

**Click on 'Next'**

[image-1623411562972.png](#)

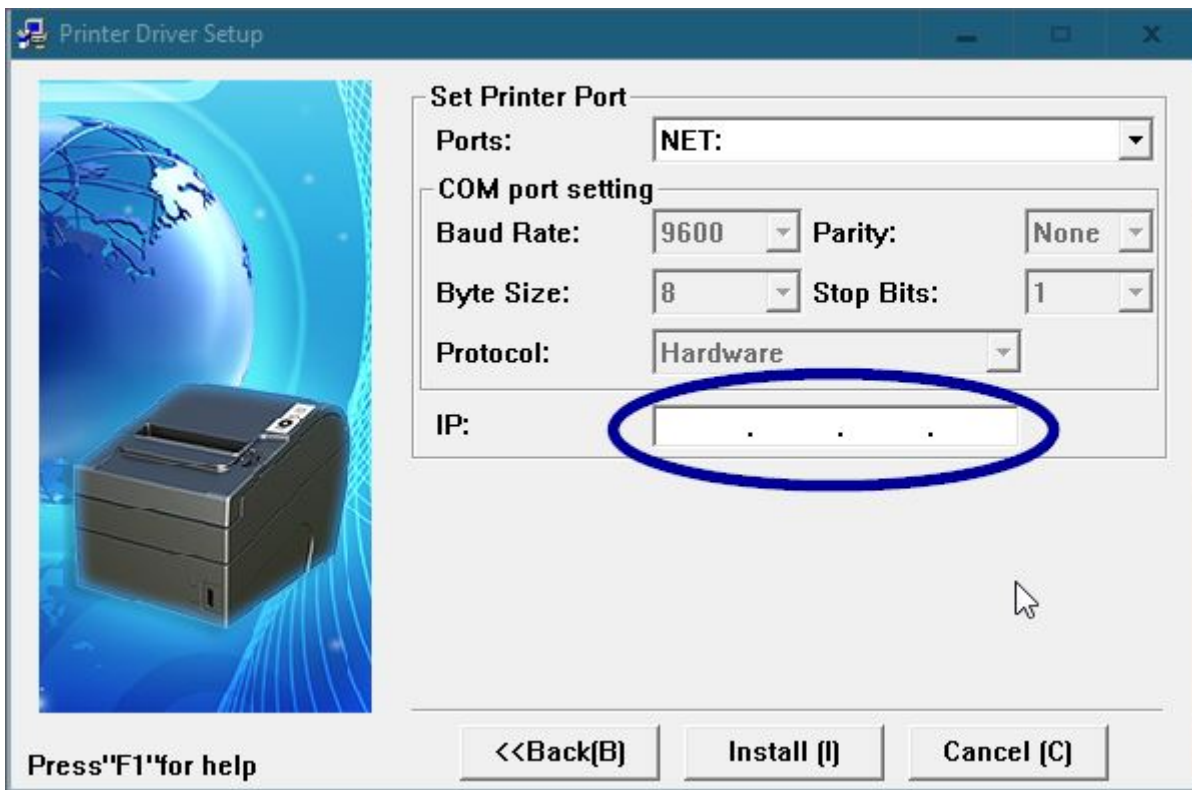
Image not found or type unknown

**Click on 'Next'**

[image-1623411562972.png](#)

Image not found or type unknown

**On the next screen choose "Net" from the drop down and enter the printers IP address in the box and then click install at the bottom.**



The IP address of the printer is given out by you router so can be different on every network. To find out what it is on the printer power it off, hold the feed button and power it back on. You should now receive a test print from the printer and at the bottom it will give you the IP address of the printer. Press and release feed again to print a bit more of the test print and the printer will now be ready to work.

Once the driver has installed click 'OK'

[image-1623411760761.png](#)

Image not found or type unknown

You will then need to go to the 'Control Panel'

[image-1623248097139.png](#)

Image not found or type unknown

**Click on 'Devices and Printers'**

[image-1623247996906.png](#)

Image not found or type unknown

**Double click on 'U80II(E)'**



U80II(E)

**Click the 'Printer' tab**

**image-1623248260603.png**

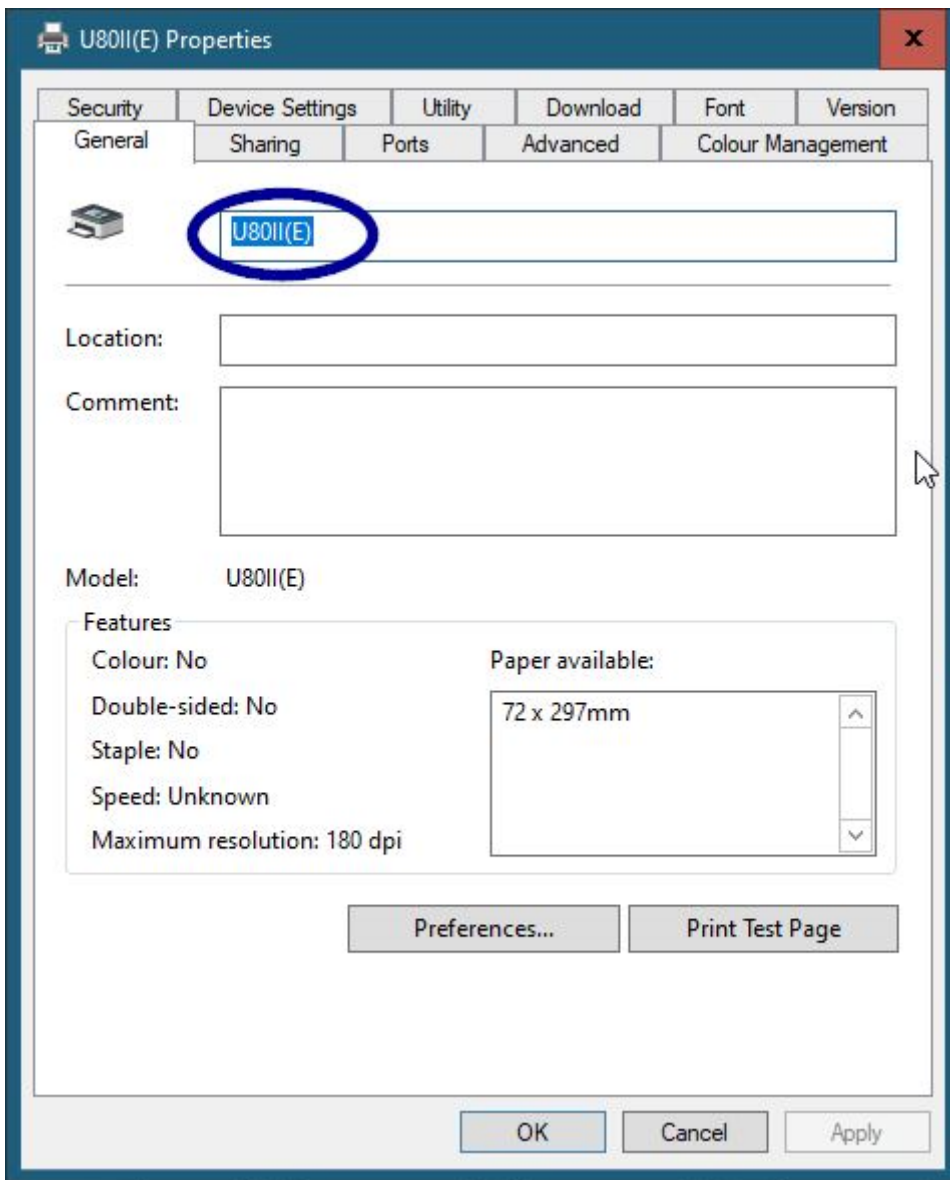
Image not found or type unknown

**Then click on 'Properties'**

**image-1623248317892.png**

Image not found or type unknown

**Click in the box that says 'U80II(E)'**



**Rename it to 'Receipt'**

[image-1623248737834.png](#)

Image not found or type unknown

**Then click 'OK'**

[image-1623248632461.png](#)

Image not found or type unknown

**To check that the printer works go to 'Properties'**

[image-1623248317892.png](#)

Image not found or type unknown

**In the 'General' tab**

[image-1623249220065.png](#)

Image not found or type unknown

**At the bottom click on 'Print Test Page'**

[image-1623249299090.png](#)

Image not found or type unknown

**This will then do test page**

[image-1623249378961.png](#)

Image not found or type unknown

**Then on the Server in inTouch go to 'Management'**

[image-1623413441740.png](#)

Image not found or type unknown

**Click on 'Occasional Menu'**

[image-1623413468507.png](#)

Image not found or type unknown

**Then 'Options'**

[image-1623413497979.png](#)

Image not found or type unknown

**In the 'Receipt' tab**

[image-1623413538994.png](#)

Image not found or type unknown

**You will then see 'Printer Type'**

[image-1623413607830.png](#)

Image not found or type unknown

**Click on the drop down**

[image-1623413644452.png](#)

Image not found or type unknown

**Select 'Epson Thermal'**

[image-1623413692972.png](#)

Image not found or type unknown

**Then 'Save & Exit'**

[image-1623413728988.png](#)

Image not found or type unknown

**And 'Exit'**

[image-1623413749749.png](#)

Image not found or type unknown

**And 'Main Menu'**

[image-1623413774861.png](#)

Image not found or type unknown

**Then just do a test print**

[image-1623413819780.png](#)

Image not found or type unknown

---

Revision #8

Created Tue, May 17, 2022 9:07 AM by [Simon](#)

Updated Fri, Jun 24, 2022 3:10 PM by [Simon](#)