

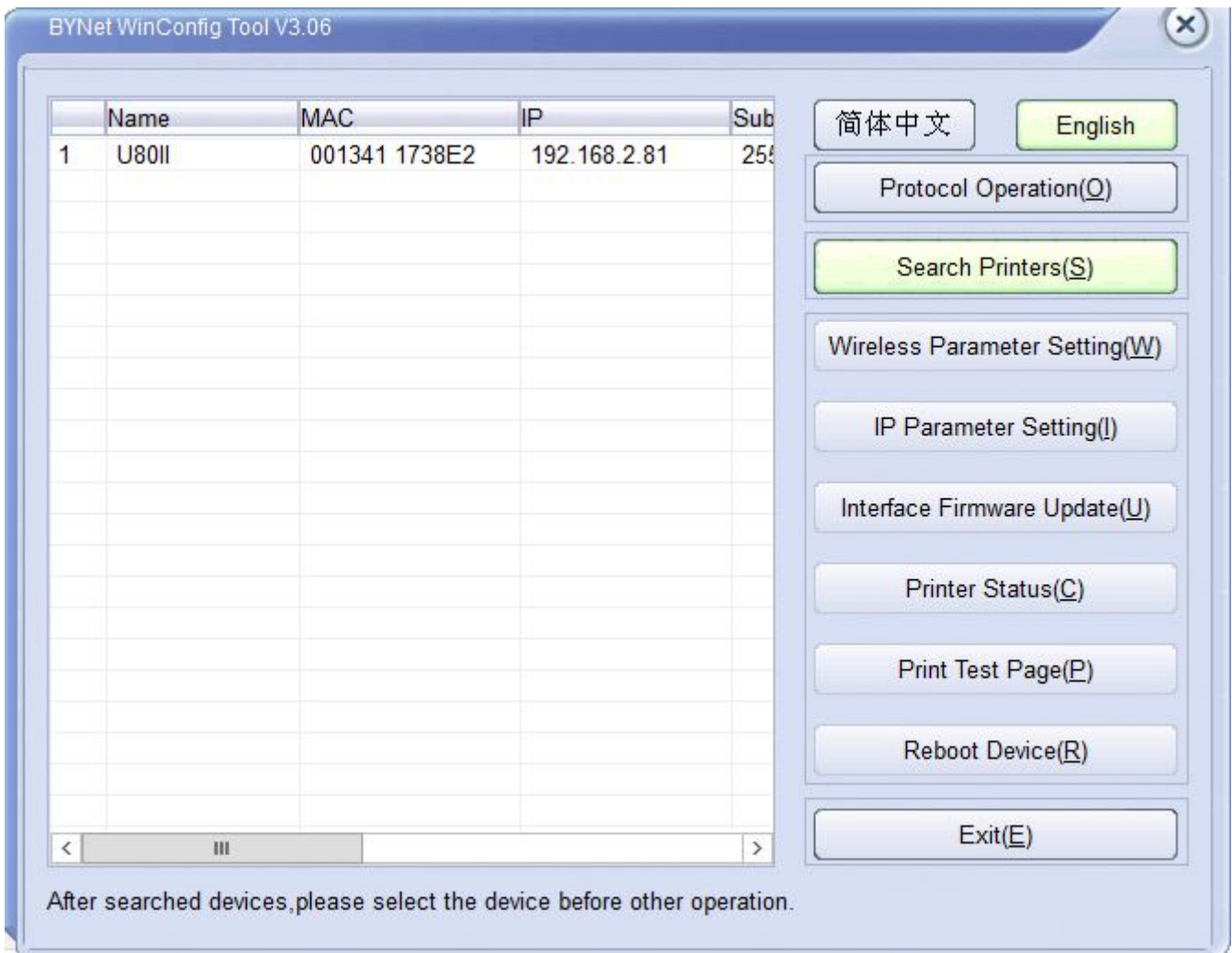
Supporting Printers

- [U80II utility to find IP address](#)
- [Resetting a TSP100LAN](#)

U80II utility to find IP address

There is a Utility called ByNetWinConfig that will search the local network for U80II printers and give you the IP address.

If you download the printer utility from the SNBC site <https://www.snbc.com.cn/gjrr> ByNetWinConfig will be part of it.



If you click on Search Printers(S) it will display any printers it finds on the left and show you the IP address of the printer.

Resetting a TSP100LAN

If you are have problems with a star TSP100 LANs IP address the following procedure can sometimes reset it to DHCP.

1. Turn your printer off at the switch on the side
2. Open the paper hatch and leave it open
3. With the paper hatch open, hold down the **Feed** button and while you're holding it down, switch the printer back on. Keep holding the feed button.
4. Keep your finger on the **Feed** button until the **Ready** and **Error** lights start to blink blue and red. Once they start flashing, release the **Feed** button.
5. Close the paper hatch.
6. Turn off the printer. When you power it back on, the printer will be set to DHCP.

If this doesn't work there is a method for doing a reset with dip switches on the printer

[Ethernet/WiFi Reset on Star Printers - YouTube](#)