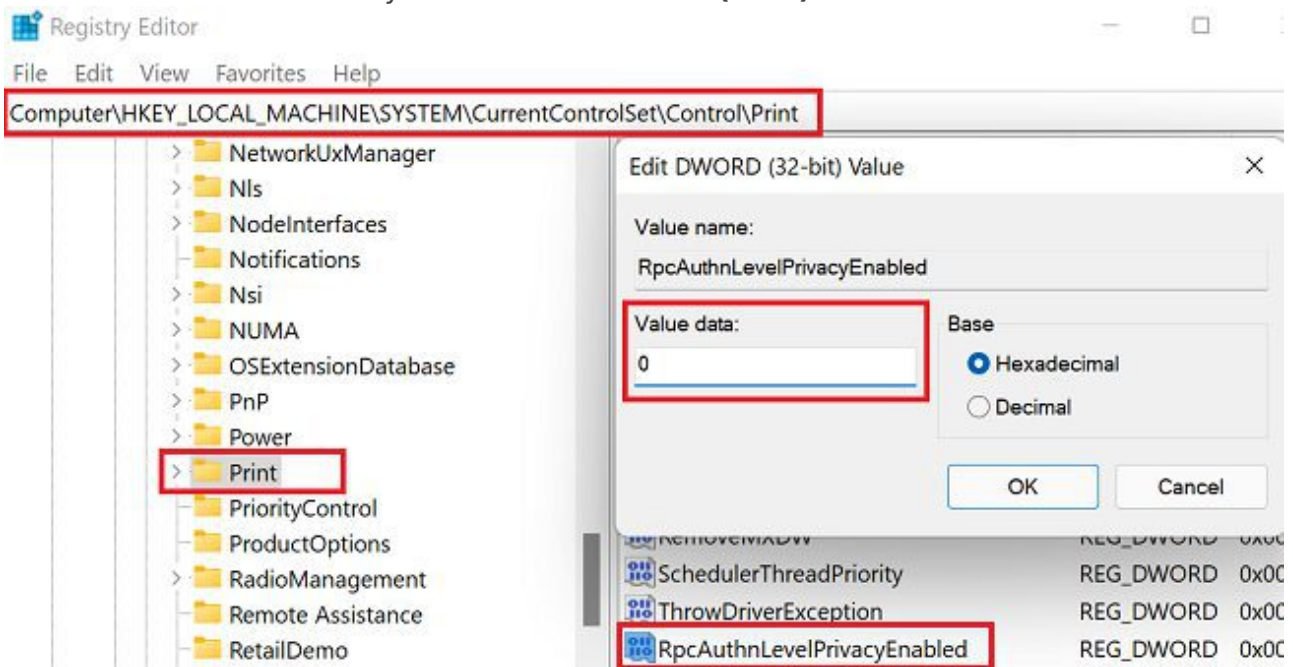


How to Fix Windows Printer Error 0x0000011b

Disable Print Spooler RPC Encryption

1. Launch the Registry Editor.
2. Navigate to `HKEY_LOCAL_MACHINE\System\CurrentControlSet\Control\Print`.
3. Right-click on the **Print** key and select **New** → **DWORD-32 bit Value**.
4. Name the new key **RpcAuthnLevelPrivacyEnabled**.
5. Double-click on the new key and set its value to **0 (zero)**.



6. Restart your computer, and check if it connects to your printer.

This change needs to be made on the machine with the shared printer and the one that wants to use it.

<https://www.technipages.com/how-to-fix-windows-printer-error-0x0000011b>

Revision #2

Created Fri, Jun 24, 2022 3:06 PM by Simon

Updated Wed, Apr 12, 2023 10:09 AM by Simon